

# Monthly Labour Market Summary

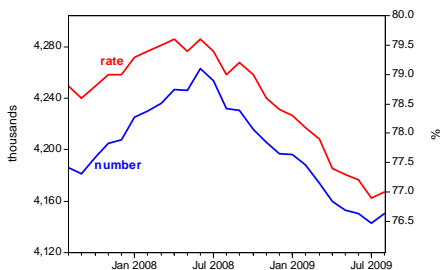
## Key Indicators

|                            | Sep-08       |      | Jun-09       |      | Sep-09       |      |
|----------------------------|--------------|------|--------------|------|--------------|------|
|                            | Level (000s) | Rate | Level (000s) | Rate | Level (000s) | Rate |
| <b>Economic Activity</b>   | 4,433        | 83.1 | 4,417        | 82.4 | 4,415        | 82.1 |
| <b>Economic Inactivity</b> | 868          | 17.1 | 897          | 17.6 | 911          | 17.9 |
| <b>Employment</b>          | 4,233        | 79.3 | 4,154        | 77.3 | 4,150        | 77.0 |
| <b>Unemployment</b>        | 200          | 4.5  | 263          | 5.9  | 265          | 6.0  |

Source: ONS, November 2009  
\*Rate based on working age  
\*Level- 000's

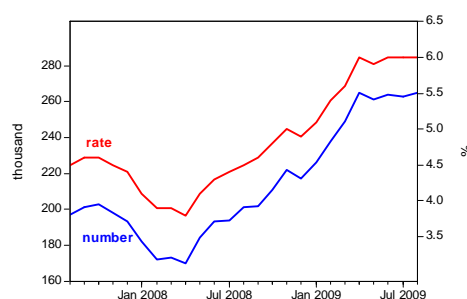
- **Claimant count unemployment** in October 2009 was **154,857**.
- **42,036 vacancies** notified to **Jobcentre Plus** in October 2009.
- **265,000 unemployed people** in the three months to September 2009 – up 4,000 on previous quarter.
- **Unemployment rate 6%** in the 3 months to September 2009 - the lowest of any region.
- Number of people in **employment in the region decreased by 3,000** in the three months to September.
- **Employment rate 77%** in the three months to September.
- **No change in the number of economically active people.**
- **Economic activity rate of 82.1%** was down 0.2 percentage points on the previous three months.

Employment continues to fall



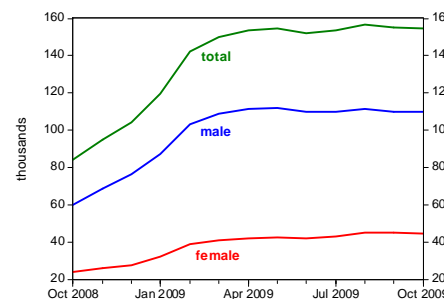
Source: ONS 2009

Unemployment levelling off...?



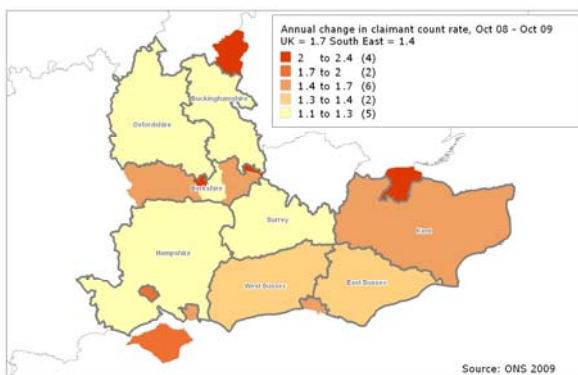
Source: ONS 2009

Claimant count remains broadly flat

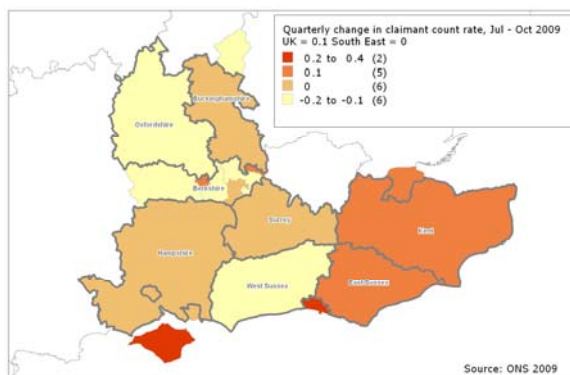


Source: ONS 2009

## Claimant Count

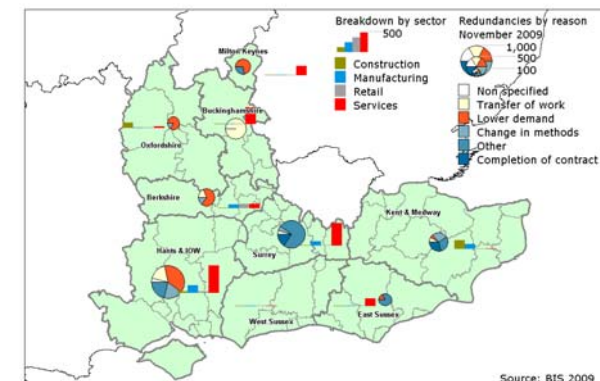


Source: ONS 2009



Source: ONS 2009

## Redundancies



Source: BIS 2009