

**Welcome to:**

**South East England  
Development Agency**

**Annual Open Public  
Meeting 2009**

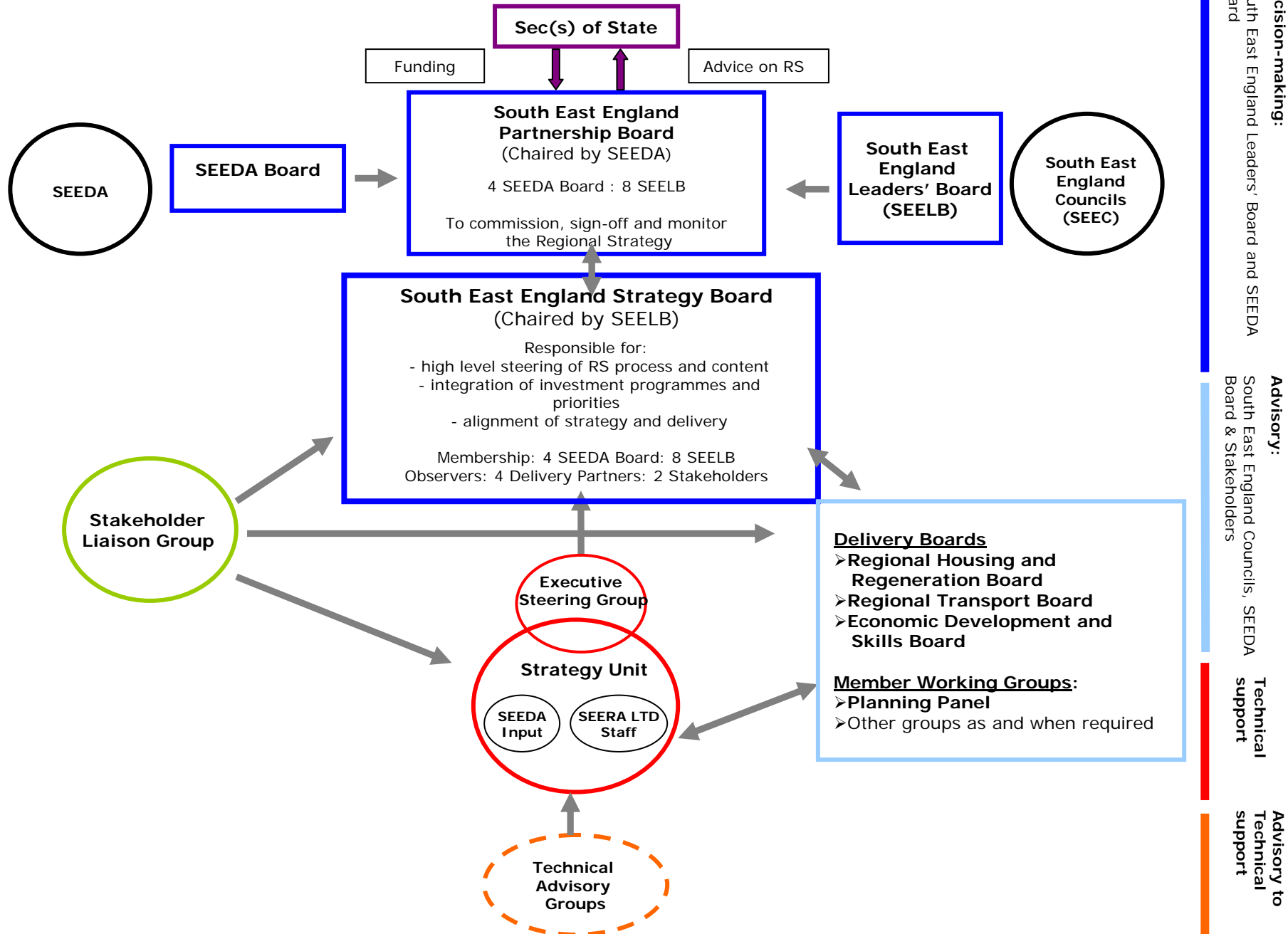
[WWW.SEEDA.CO.UK](http://WWW.SEEDA.CO.UK)

# Councillor Paul Carter

# Leader of Kent County Council

[WWW.SEEDA.CO.UK](http://WWW.SEEDA.CO.UK)

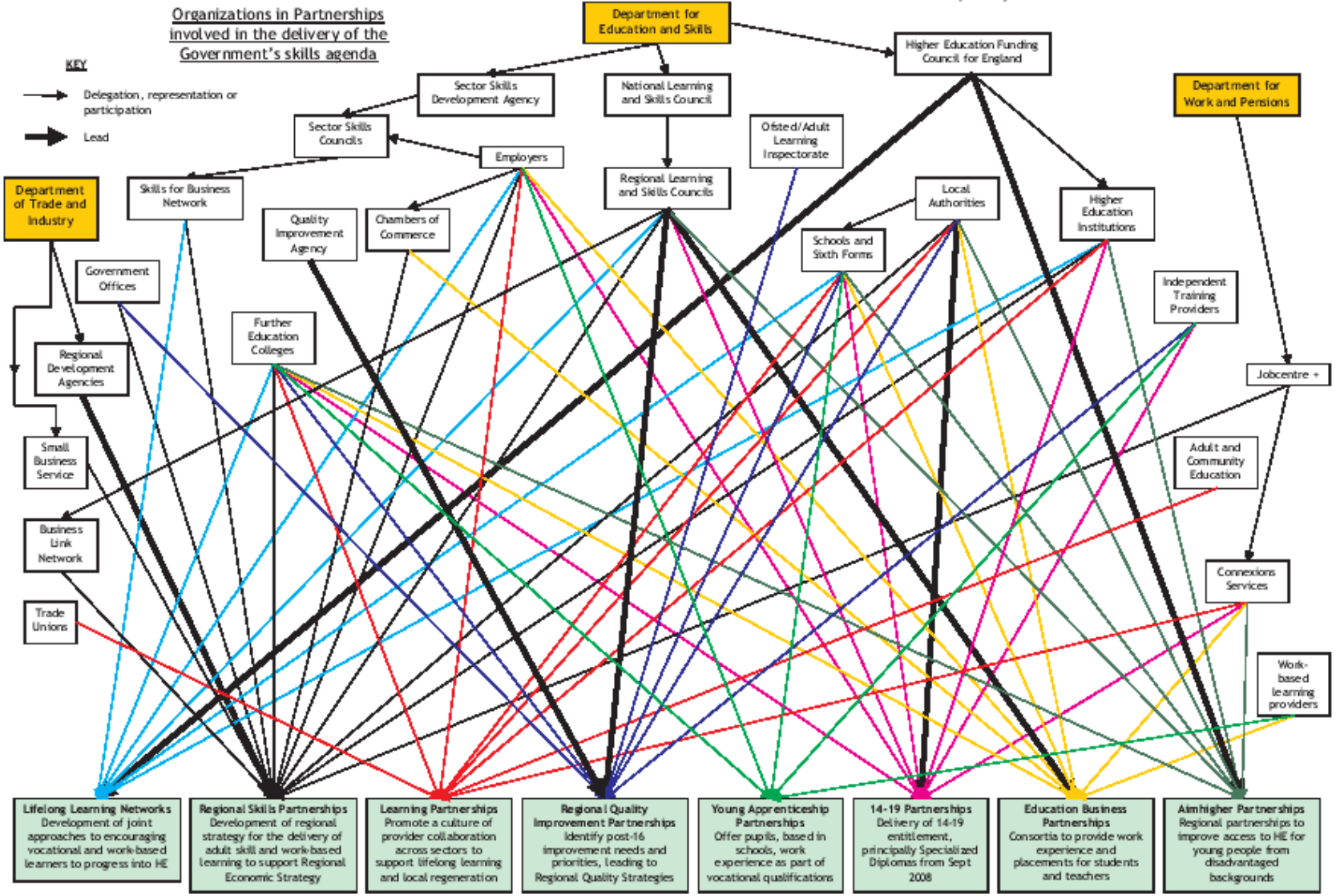
# Regional Strategy: Proposal for Governance Arrangements in the South East (Working Model – July 2009)



### Organizations in Partnerships involved in the delivery of the Government's skills agenda

**KEY**

- Delegation, representation or participation
- ➔ Lead



**Lifelong Learning Networks**  
Development of joint approaches to encouraging vocational and work-based learners to progress into HE

**Regional Skills Partnerships**  
Development of regional strategy for the delivery of adult skill and work-based learning to support Regional Economic Strategy

**Learning Partnerships**  
Promote a culture of provider collaboration across sectors to support lifelong learning and local regeneration

**Regional Quality Improvement Partnerships**  
Identify post-16 improvement needs and priorities, leading to Regional Quality Strategies

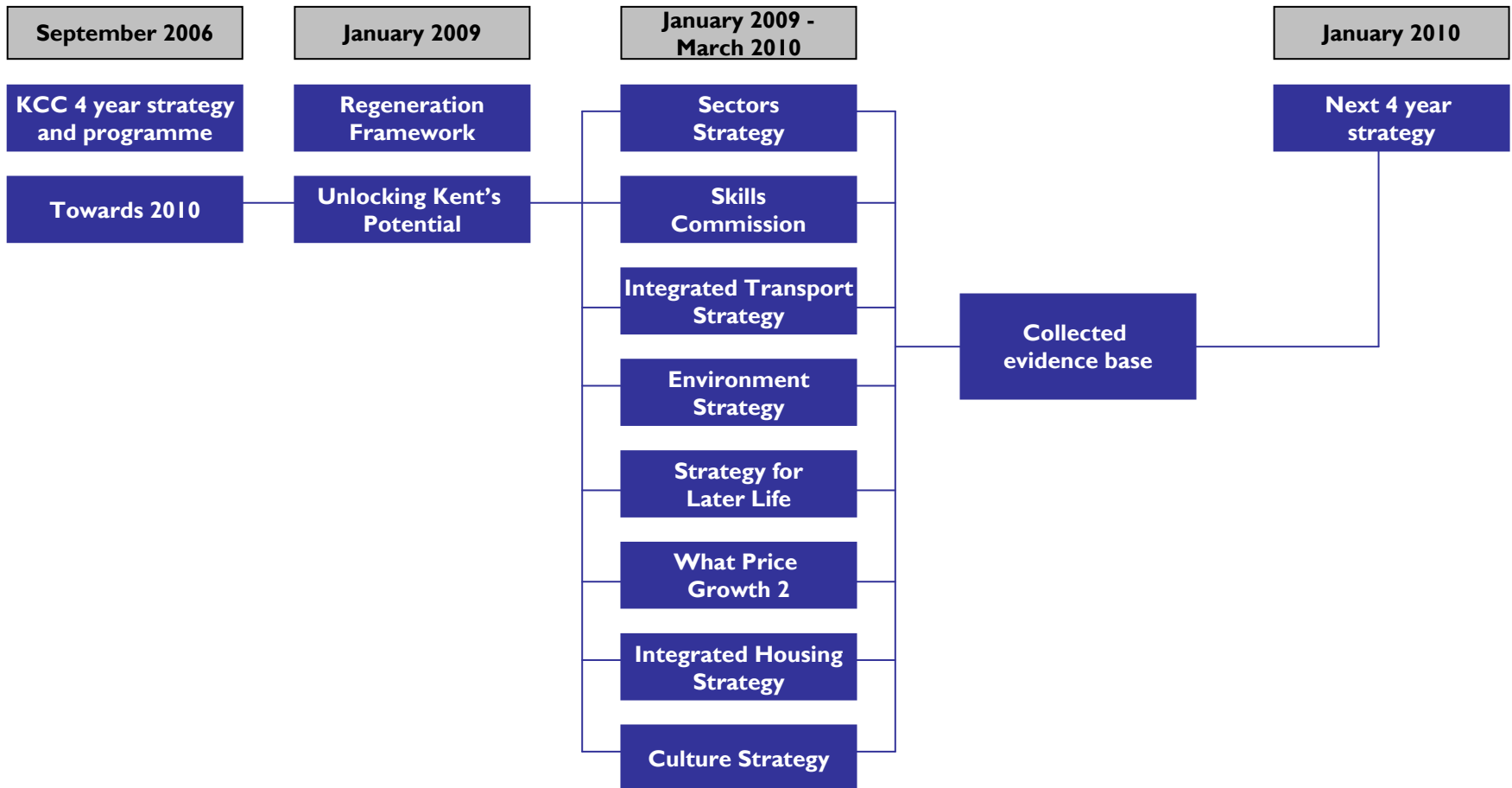
**Young Apprenticeship Partnerships**  
Offer pupils, based in schools, work experience as part of vocational qualifications

**14-19 Partnerships**  
Delivery of 14-19 entitlement, principally Specialized Diplomas from Sept 2008

**Education Business Partnerships**  
Consortia to provide work experience and placements for students and teachers

**Aimhigher Partnerships**  
Regional partnerships to improve access to HE for young people from disadvantaged backgrounds

# Strategic position of this Regeneration Framework



# Questions?

[WWW.SEEDA.CO.UK](http://WWW.SEEDA.CO.UK)